

Tip 11, četvorosoban

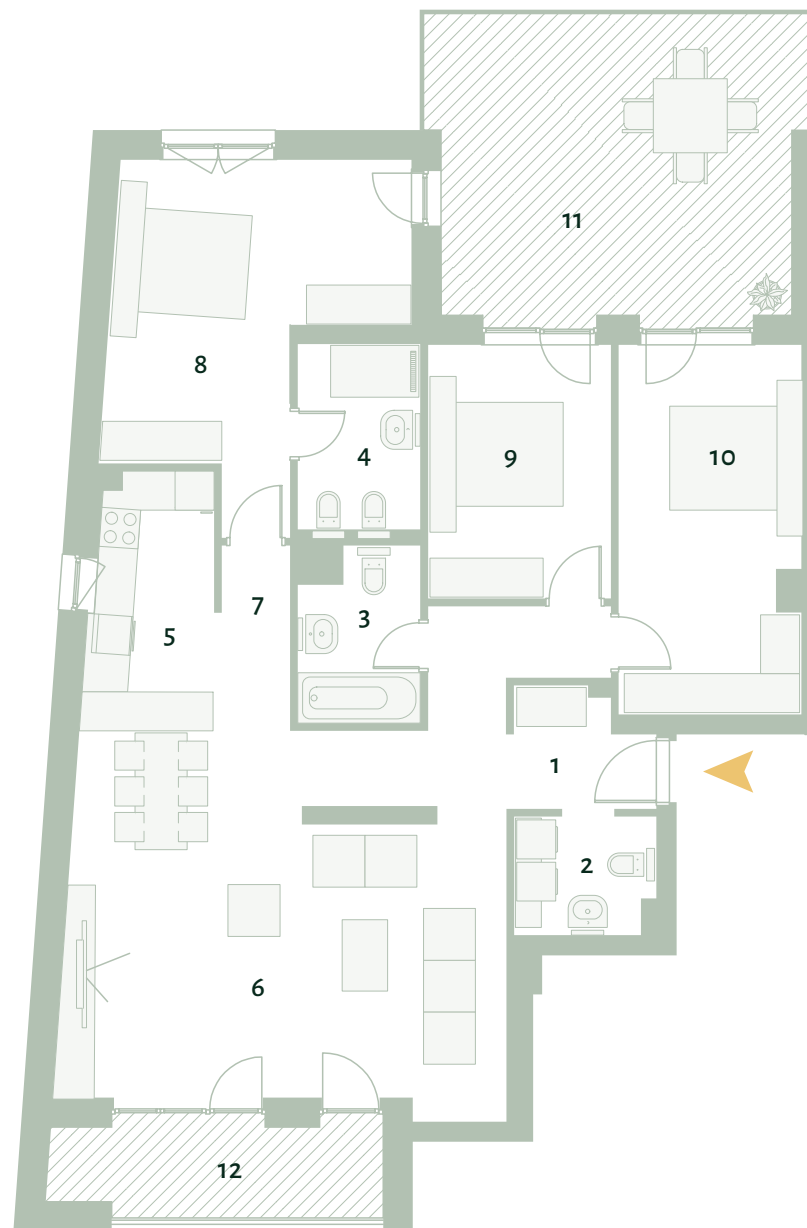
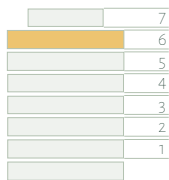
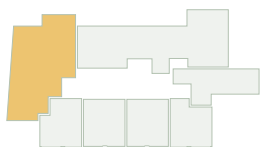
Organizacija prostora

1	Hodnik	9.14m ²
2	WC i vešernica	3.48m ²
3	Kupatilo	4.25m ²
4	Kupatilo	5.04m ²
5	Kuhinja	7.39m ²
6	Dnevni boravak sa trpezarijom	36.88m ²
7	Hodnik	3.25m ²
8	Soba	19.27m ²
9	Soba	11.05m ²
10	Soba	15.41m ²
11	Terasa	25.03m ²
12	Terasa	7.45m ²

Ukupno

147.64m²

Pozicija u zgradi



ENERGA+